



Government Edition

pcmg.com | 1-800-625-5468



Data Center

Cloud

Software

Mobility

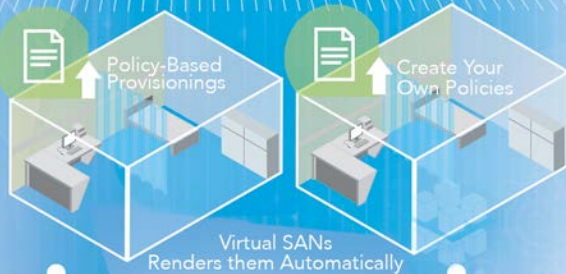
Networking



# A New Approach to Storage Systems

PCMG's SAN Storage solution gives you better storage, faster computing, and worry-free management. **PAGE 28**

DELIVERED AS SOFTWARE



**50%**  
Lower TCO





PCMG can help with an **Intel vPro Management Solution**



SCAN CODE to watch video

## The PCMG Advantage

### Government Drives Our Business

From single item purchases to complex procurements, PCMG is the reseller of choice for thousands of federal, state, and local government customers. And from tablet computers to the data center — and everything in between — we have the solutions and services you need to fulfill your IT mission.

### Contracts & Procurement Options

#### Federal Government Wide Acquisition Contracts

GSA Contract: GSA-35F-5946H  
 ECS III Contract: HHSN263999900456I  
 NASA SEWP IV Contract: NNG07DA08B & NNG07DA62B  
 Netcents-2 Contract: FA8732-14-D-0006

#### Agency Specific Contracts, Blanket Purchase Agreements, and Portals

NASA HQ, World Bank, DoD Email, DOE, AFWAY, Intramalls, and many more.

#### Leading State and Local Contracts

California Multiple Award Schedule  
 California Department of General Services (Microsoft)  
 Commonwealth of Virginia Accessories, Peripherals, & Software  
 Los Angeles Department of Water and Power  
 Texas DIR Adobe  
 And more...

#### Authorizations and certifications at the highest levels from most major manufacturers:



**No Credit Card Surcharges**  
 We accept MasterCard, Visa, Discover, American Express, and Diners Club



PCMG Sales **1.800.625.5468**

Web: [pcmg.com](http://pcmg.com)

E-mail: [sales@pcmg.com](mailto:sales@pcmg.com)

#### PCMG goes green!

The paper used in this catalog, except for the inserted material, was printed on paper certified under the Sustainable Forestry Initiative® program, which integrates the perpetual growing and harvesting of trees with the protection of wildlife, plants, soils, and water.

Visit [www.sfiprogram.org](http://www.sfiprogram.org) for more information on the SFI program.



# PCMG Services Portfolio

## P Procurement & Logistic Services

PCMG takes the hassles out of IT procurement and logistics with advanced eProcurement, warehousing, and integration systems that give you the tools and resources to reduce costs and track assets across the technology lifecycle.

- eProcurement
- Logistics
- Distribution Facilities
- Product Staging
- Imaging
- Integration
- Refurbishment

## C Consulting & Implementation Services

Our national team of certified engineers, technicians, and project managers are experts in their field with certifications spanning today's best-in-class technologies.

- Enterprise Mobility Management
- Network, Wireless and Voice
- Data Center
- Application Support
- Private Cloud
- iSeries

## M Managed Services & Hosting

Trusted by customers for more than two decades, PCMG Managed IT Support Services provide you the highest level of expertise and professional oversight of your IT operations.

- Data Center Hosting
- Managed Services
- Monitoring
- Public Cloud
- Staffing
- Break/Fix
- Service Desk
- Field Support Services

## PCMG offers seven crucial services aimed at improving the efficiency of your organization

We offer you a set of comprehensive IT solutions that are relevant to your organization's needs by leveraging our expertise in a variety of individual practice areas. Each one of our services is customized to your organization and thoroughly researched, coordinated, and executed by our team of skilled engineers. PCMG is equipped to offer you the following high-quality services:

### Network RISC Analysis

We'll analyze your network, give you a traffic and asset report along with recommendations based on the risks, costs and opportunities of improving your growing network.

### Enterprise Mobility Management

As mobile devices become more prevalent in the workplace, we can help deploy, secure and resolve technical challenges your organization might face with mobility management and integration.

### Office 365 Migration

Get Professional Office 365 migration services to ensure a successful transition from on-premise Exchange, SharePoint and Lync to the Microsoft Cloud-based Office 365 Platform.

### Cisco Business Edition 6000

Benefit from premium voice, video, mobility, messaging, conferencing, instant messaging and presence, and contact center features on a single, integrated platform.

### PCMG Smart Care

Keep your network running fast and efficiently with PCMG Smart Services. PCMG works with Cisco to offer you expert support in device management and technical services.

### Windows 2003 Server Migration

Ensure your software and hardware servers are up to date and remain in compliance, even after the end of life for Windows Server 2003. PCMG can help you migrate and update your server through solutions that best fit the needs of your organization.

### Virtualization Assessment

Receive an in-depth analysis of your computing footprint including recommendations on systems, memory and processors needed to support your organization's virtual design.

Speak with a PCMG Service Expert Today  
**1.800.625.5468**

## Inside this issue:

### HARDWARE

#### Systems

Apple Systems	4, 38-39
Laptops & Notebooks	5, 10-12
Tablet Computers	6-8, 13
Desktops	20-22

#### Peripherals & Add-ons

Displays	18
Projectors	36
Printers & Scanners	34-37

#### Data Center Solutions

Storage and backup	24-25
Network Storage	29
Servers	30-31

### ARTICLES

Wireless Networking	23
SANS Storage	28
Virtualization	32

### SOFTWARE

Mobility Software	9
Microsoft Software	14, 26
Creative Software	15
Security Software	16-17
Backup Software	26
Virtualization Software	33

### TERMS OF USE & SALE

37

#### Intel

Ultrabook, Celeron, Celeron Inside, Core Inside, Intel, Intel Logo, Intel Atom, Intel Atom Inside, Intel Core, Intel Inside, Intel Inside Logo, Intel vPro, Itanium, Itanium Inside, Pentium, Pentium Inside, vPro Inside, Xeon, Xeon Phi, and Xeon Inside are trademarks of Intel Corporation in the U.S. and/or other countries.

# iPad

## Superb productivity at your fingertips

### Apple iPad mini 3

Enjoy breakthrough technology you can actually feel with the iPad mini™ 3 equipped with Touch ID™ technology fingerprint sensor. Get the ultimate security with your fingerprint—mother nature's strongest password.

- 7.9-inch Retina® display (diagonal)
- Touch ID fingerprint sensor
- 5MP iSight® camera

Starting at **\$399\***  
Available in Space Gray, Silver or Gold.

### Apple iPad Air 2

At just 6.1mm, the thinnest iPad® ever is also the most capable. It has a re-engineered 9.7-inch Retina display, the revolutionary Touch ID fingerprint sensor and a powerful processor to keep up with your workday.

- A8X chip with 64-bit architecture
- iSight camera, FaceTime® HD camera
- Up to 10-hour battery life

Starting at **\$499\***  
Available in Space Gray, Silver or Gold.



## Surround your iPad with protection



### iPad Smart Cover®

- Covered hinge fits iPad's thin profile
- Designed for ultimate portability
- Comes in a variety of sleek colors

only **\$39\***

\*Price is as of January 15, 2015, is subject to change, does not include taxes or shipping, and is U.S. pricing. Apple, the Apple logo, FaceTime, iPad, iSight, Retina and Smart Cover are trademarks of Apple Inc., registered in the U.S. and other countries. iPad Air, iPad mini and Touch ID are trademarks of Apple Inc.



# For speed, simplicity and security.

Chromebooks are the perfect computer for the way that people work and live today — we use different devices in a range of places, are always on the go, and need apps to help us stay productive and have fun.



## More than meets the eye

A new type of computer designed to help you get things done faster and easier.

## Full range of features

Runs on Chrome OS that has multiple layers of security, cloud storage, and the most popular Google products built-in.



Best of Google built-in



Cloud storage built-in



Security built-in



Go Fast



Upgrades built-in



Connectivity built-in

## Enjoy everyday productivity

If you're looking for a notebook that's lightening fast, efficient and optimized for a full-day of work or play, look no further than the Chromebook.

They are faster, simpler, more secure and more affordable for everyone. Unlike a traditional computer it won't slow down over time because updates are automatic and maintenance is easy; all you need to do is keep it charged. It just works.

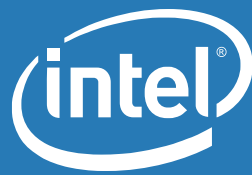


*Get access tens of thousands of web apps in the Chrome Web Store that let your work online and off.*

**Call for Pricing** #9643634

Call 1.800.625.5468 or visit [pcmg.com](http://pcmg.com)

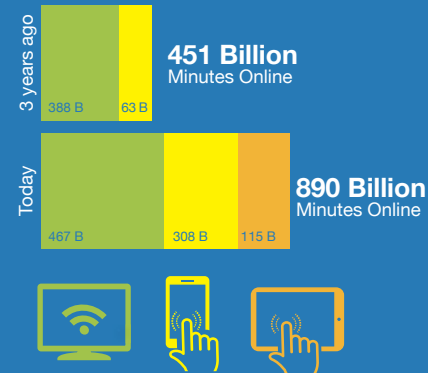




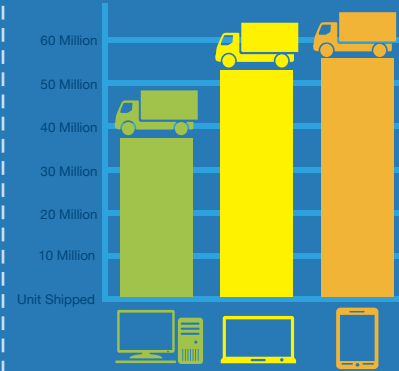
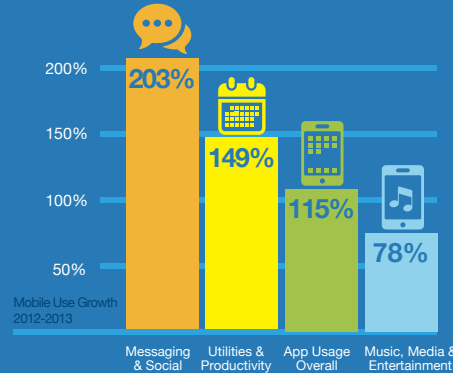
# Welcome to the Mobile World

Mobile technologies change the way we work and live at unprecedented rates.

Smartphones and tablets have doubled the time we spend online in only 3 years.

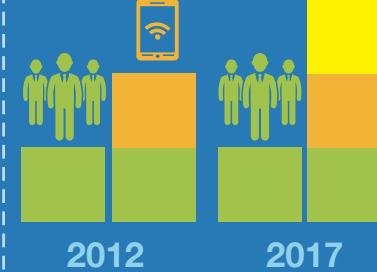
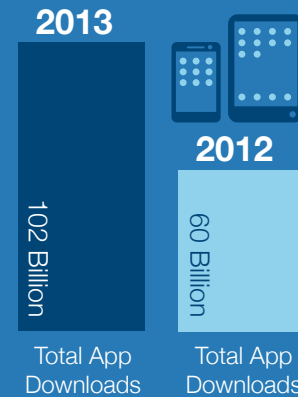


Between 2012 & 2013 overall Mobile use grew 115%. This growth was propelled by messaging and social apps.

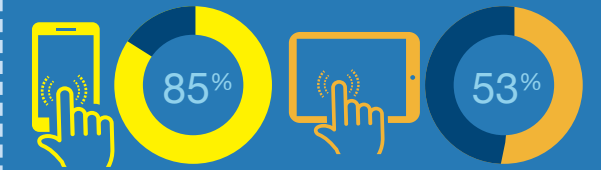


In less than three years since their debut, more tablets were shipped than desktop and notebook computers.

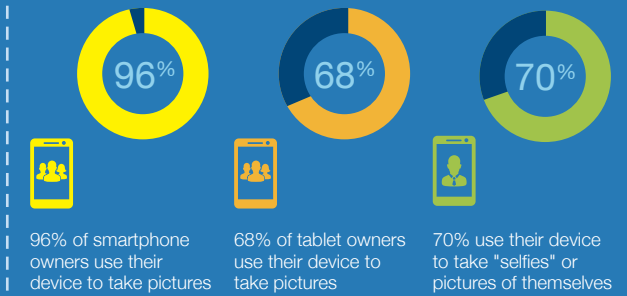
2013 saw a 60% gain in app downloads over 2012



By 2017 the number of devices connected to the internet will be nearly three times as high as the global population.



85% of the world population uses a smartphone and 53% use a tablet.



## Tablets that let you work and play faster and more efficient than ever

### 10.5" Samsung Galaxy Tab S 16GB Tablet



With the Samsung Galaxy Tab you'll immediately feel the difference of the thinnest and lightest tablet in the world. Turn it on, and you will experience an immersive, captivating device that delivers richer, truer colors.

- 16GB storage capacity
- 10.5" Super AMOLED display
- 1.90GHz Samsung Exynos 5 Octa processor
- 2560 x 1600dpi resolution
- Android 4.4 KitKat OS
- 8MP rear-facing camera



only **\$499<sup>99</sup>** #13169226  
 #13004926 Samsung Galaxy Tab 4 (16GB)  
 #9777940 Samsung Galaxy Note 10.1 Tablet (16GB)

**\$325<sup>99</sup>**  
**\$509<sup>99</sup>**

### Dell Venue 8 3000 Series (16GB)

Introducing the new 8" lightweight Android tablet that's powerful, stylish and designed to entertain with a Full HD touch screen and award-winning audio. Spend more time away from the outlet with all-day battery life on this revamped tablet—featuring a faster processor, lighter body and improved camera over the previous model.

- 16GB storage capacity
- 8" IPS multi-touch display
- 2.10GHz Dual-Core Intel® Atom™ processor
- Android 4.4 KitKat OS
- 1920 x 1200dpi resolution
- 16GB eMMC hard drive, microSD card slot for up to 64GB additional storage

only **\$183<sup>99</sup>** #13321116



Admire your favorite photos and videos on a gorgeous Full HD touch screen.



## The multitasking companion you've been looking for is finally here

### Dell Venue 11 Pro 7000 Series (256GB)



Switch easily between desktop, laptop and tablet modes for a more flexible and versatile tablet experience. The Venue 11 Pro 7000 Series with a 10.8" display delivers the portability of a tablet, power of an Ultrabook™ and experience of a desktop when combined with an optional dock (not included).

- 10.8" IPS capacitive touch display
- Intel® Core™ i5 processor (3MB cache, 1.60GHz)
- 256GB storage capacity
- 8GB LPDDR3 SDRAM
- Windows® 8.1 Pro, 64-bit



only **\$1239<sup>99</sup>** #9855418



### 11.6" HP EliteBook Revolve 810 G2 Tablet

- Revolving 11.6" LED backlit, multi-touch display
- Intel® Core™ i3 processor (3MB cache, 1.70GHz)
- 128GB storage capacity • 12GB LPDDR3 SDRAM
- Windows® 8.1 Pro, 64-bit

only **\$1329<sup>99</sup>** #13236999

### HP ElitePad 1000 G2

The elegant and sleek HP ElitePad 1000 G2 has the performance and flexibility to help you work smarter, faster, and more secure all day long.



only **\$714<sup>99</sup>** #13212638

# Surface Pro 3

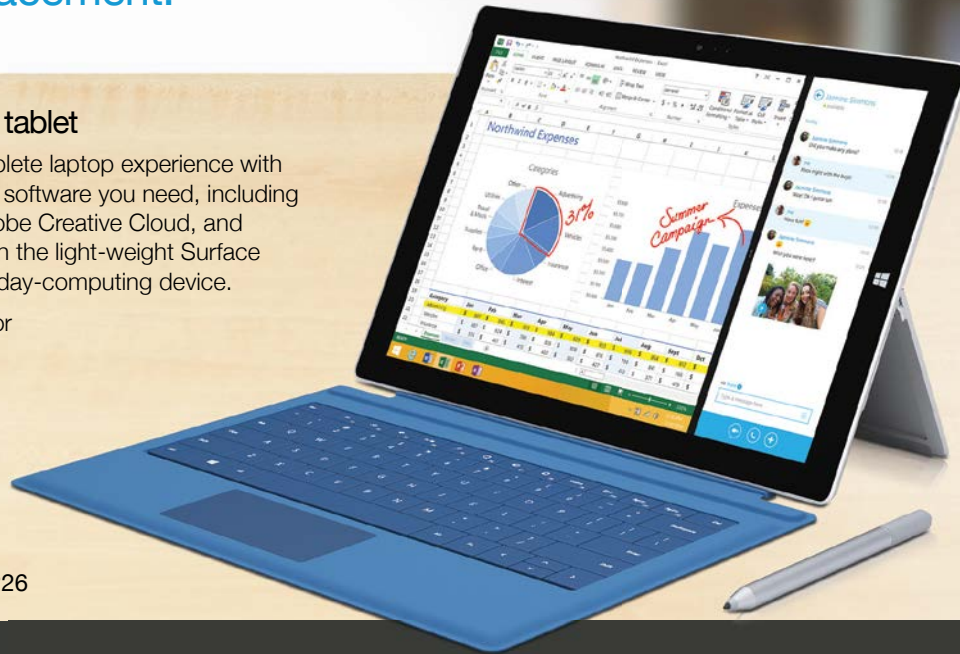
Your Laptop Replacement.



## The power of a laptop in a tablet

Surface Pro 3 gives you the complete laptop experience with the power to run all the Windows software you need, including the full Microsoft Office Suite, Adobe Creative Cloud, and iTunes. So replace your laptop with the light-weight Surface Pro 3, the most convenient everyday-computing device.

- 4th gen Intel® Core™ i3 processor (3MB cache, 1.50 GHz)
- 4GB LPDDR3 SDRAM
- 64GB SSD
- 12" multi-touch screen
- Intel® HD Graphics 4200



starting at **\$799<sup>99</sup>** #13156226

### Dimensions:



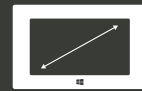
11.5" x 7.93" x 0.3"

### Resolution:



2160 x 1440 2K color-calibrated screen

### Screen size:



12" ClearType Full HD display

### Battery Life:



Up to 9 hours of web browsing

### Processor:



4th generation Intel® Core™ i3, i5 or i7

## All in the wrist

Write and draw naturally

Surface Pen lets you intuitively mark documents and creative files, take notes in your own handwriting, and gather electronic signatures.



## Kick it up

View from any angle

The integrated Kickstand now features multiple positions so you can work comfortably whether you're on the plane, at your desk, or in front of the television.



## New Features Galore

### Lighter and Larger Display

Featuring a gorgeous 12" display encased in a sleek magnesium frame, the Surface Pro 3 is the thinnest and lightest in our Surface Pro family of devices.



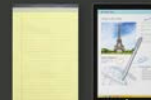
### Run More Apps and Programs

Pre-loaded with Windows® 8.1 Pro, you can install your favorite desktop software, including the full Office Suite and thousands of Windows programs.



### Unmatched Tablet Versatility

Go from tablet to laptop with the multi-position Kickstand. Magnetic stability keeps the Surface Pro 3 Type Cover steady, so you can work just as comfortably on your lap as at your desk.



# Boost business productivity with cutting-edge software

## AirWatch PROFESSIONAL SERVICES

AirWatch Professional Services offers a range of resources for the successful planning, implementation, maintenance and advancement of any AirWatch deployment.

- Leading solutions from Mobility to workspace management
- Comprehensive software licenses

only **\$1111<sup>99</sup>** #9903115

#13163092 AirWatch Mobile Device Mgmt Monthly Fee

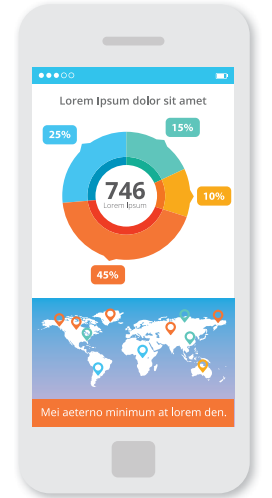
**\$10**

#13163094 AirWatch Mobile Device Mgmt Sub Monthly Fee

**\$3<sup>25</sup>**



*AirWatch provides customers with fast and easy ways to interact with AirWatch experts.*



*Enterprise Mobility Management Gold Bundle is per user. Maintenance Support for is up to one year.*

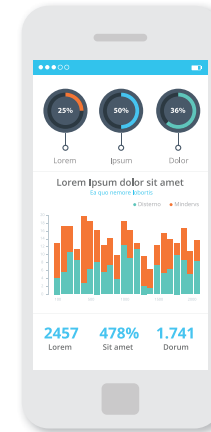
only **\$34<sup>99</sup>** #13345863

#13322549 MobileIron Enterprise Management Gold Bundle

**\$23**

#13322551 MobileIron Upgrade for EMM Gold to Platinum Bundle

**\$5<sup>99</sup>**



## MobileIron Enterprise Mobility Management Gold Bundle (1 Year License)

Provides users with seamless access to the business processes and content they need on mobile devices while providing IT the ability to secure corporate data. Designed for customers ready to take the next step of the Mobile First Journey

- Core – Central administrative console
- Sentry – Secure Enterprise Gateway
- Apps@Work – Enterprise App Store
- AppConnect – Secure apps and app specific VPNs for AppConnect enabled Apps
- Docs@Work – Secure access and document sharing
- Web@Work – Secure browsing services

## MaaS360 Advanced Mobility Management Solutions

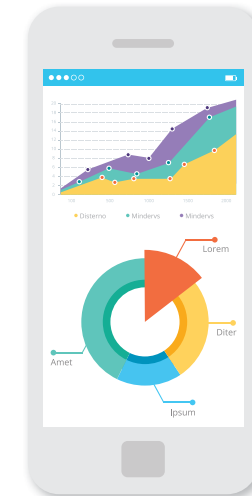
### Get the bigger mobility picture of your business

MaaS360 provides a clear view of your mobility environment and the actionable intelligence you need to keep corporate data secure, employees productive, and costs down, while embracing the consumerization of IT.

### Enjoy the one-stop-shop platform

MaaS360 delivers a complete enterprise mobility management solution with one platform that integrates comprehensive security for all your mobile assets. At the same time, it enables the flexibility and modularity needed to match the challenges and use cases for your organization with standalone products.

- Integrates comprehensive security for all mobile assets
- Options across different categories of users, devices, content, and apps
- Monthly software license agreement



*Offers the flexibility to implement tiered or layered mobile security to address varied end user needs.*

only **\$37<sup>99</sup>** #13337319

# Get top speed and security

## 15.6" HP ProBook 450 G2

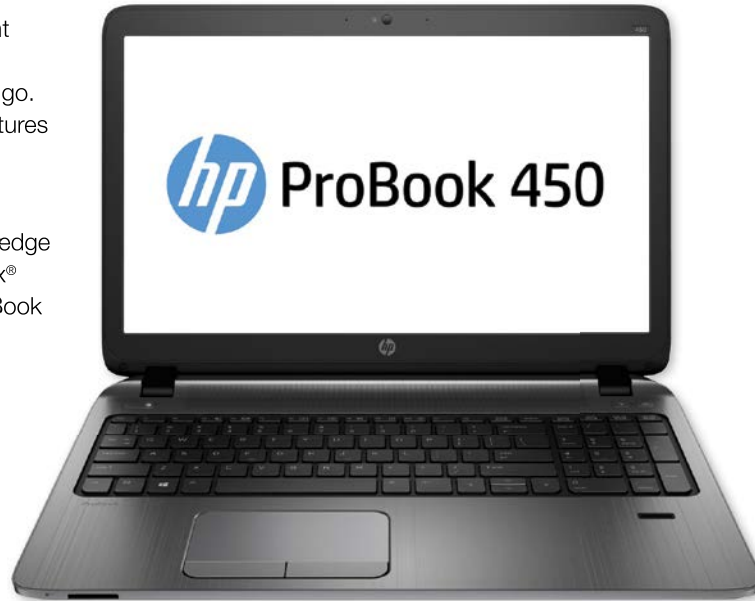
The sleek HP ProBook 450 G2 with optional 10-point touchscreen and the latest generation technologies delivers powerful performance in the office or on the go. Proven reliability and comprehensive HP security features help keep your data and investment protected.

### Sleek and portable design

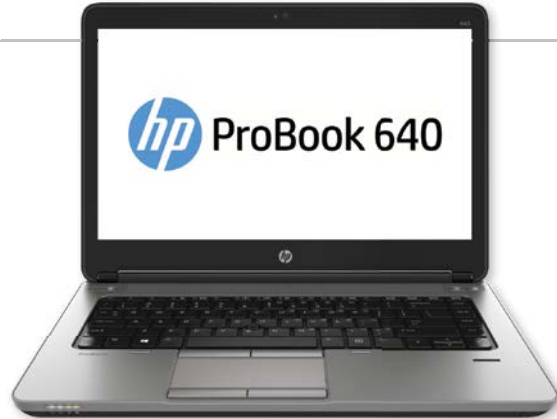
Get the technology you trust from HP, with cutting-edge style that looks and feels the way you want. DuraFlex® paint and an aluminum palm rest keep your HP ProBook looking good, with fewer scuffs and scratches.

- 4th gen Intel®Core™ i3 processor (3MB cache, 1.70GHz)
- 4GB DDR3L SDRAM
- 500GB HDD
- 15.6" LED backlit display
- Intel® HD Graphics 4400

only **\$579<sup>99</sup>** #13220344



*Built-in security safeguards your HP ProBook against viruses and detects possible corruption.*



## 14" HP ProBook 640 G1

Take on tasks in the office or on the road with a durable HP ProBook 640. These ProBooks are thin, light and packed with productivity features to make work faster and easier.

- 4th gen Intel®Core™ i5 processor (3MB cache, 2.60GHz)
- 4GB DDR3L SDRAM • 500GB HDD
- Intel HD Graphics 4600 • DVD±RW SuperMulti drive

only **\$779<sup>99</sup>** #13286870

## 14" HP EliteBook Folio 9480m

- 4th gen Intel®Core™ i5 (3MB cache, 1.70GHz)
- 4GB DDR3L SDRAM
- 500GB HDD
- Intel® HD Graphics 4400
- Integrated webcam



only **\$949<sup>99</sup>** #13223535

## 14" HP EliteBook Folio 9480m

- 4th gen Intel®Core™ i5 (3MB cache, 2GHz)
- 4GB DDR3L SDRAM
- 256GB SSD Self Encrypting Drive
- Intel® HD Graphics 4400



only **\$1219<sup>99</sup>** #13238734

# Designed to outperform **FOR THOSE WHO DO.**

## 12.5" Lenovo ThinkPad Yoga 20CD

The ThinkPad Yoga delivers flexibility for business. It's 12.5" display rotates 360 degrees to offer four different usage modes: Laptop, Tablet, Tent, and Stand. Boasting legendary ThinkPad reliability and a range of business and security features, it's the ultimate multimode business Ultrabook.

### Enjoy a multi-touch experience

Interact with your ThinkPad Yoga by using simple, intuitive gestures directly on the 10-point multi-touch display—optimized for Windows 8. Its advanced multi-touch technology provides a superior touch experience, greater responsiveness, and faster response times.

- 4th gen Intel®Core™ i7 processor (4MB cache, 2.10GHz)
- 8GB DDR3L SDRAM
- 256GB SSD
- 1920 x 1080 Full HD resolution
- Intel® HD Graphics 4400

only **\$1578<sup>99</sup>** #9901998



*At a mere 3.5lbs, the ThinkPad Yoga is ultra portable and perfect for professionals on the go.*



## 14" Lenovo ThinkPad E440 20C5

The Lenovo ThinkPad E440 includes unique security and productivity features to keep your organization up and running: after-hours maintenance, software monitoring, USB blocker, energy savings, and the ability to backup and restore applications.

- 4th gen Intel®Core™ i5 processor (3MB cache, 2.50GHz)
- 4GB DDR3L SDRAM
- 500GB HDD
- Intel® HD Graphics 4600

## 14" Lenovo ThinkPad T440p 20AN

With the Lenovo ThinkPad T440P, you are assured that your files stay safe even after getting a nasty bump, thanks to its roll-cage technology. For durability, this ThinkPad laptop is equipped with a carbon fiber top and a lightweight magnesium bottom—optimized for travel.

- 4th gen Intel®Core™ i5 processor (3MB cache, 2.50GHz)
- 4GB DDR3L SDRAM
- 500GB HDD
- Spill-resistant, multi-touch touchpad
- Intel® HD Graphics 4600

only **\$748<sup>99</sup>** #9811024



*Login with a quick finger swipe on the integrated fingerprint reader.*

only **\$679<sup>99</sup>** #9932983



Latitude 13 7000 Series 2-in-1 Get Ultrabook™ power, tablet mobility and Latitude security in one sleek, work-anywhere device.



**Business as usual is never usual.**  
That's why Dell has built the world's most secure 2-in-1 to power your mobile workforce.

**13.3" Dell Latitude 13 7350**

With a high-performance Ultrabook™ and a detachable 13" tablet in one device, the new Latitude 13 7000 Series 2-in-1 allows users to work how they want, where they want, while maintaining industry-leading security and easy remote management.

**Designed to do it all**

With its lightweight design and Full HD touch display, Intel® Core® M processors, you get an uncompromised laptop and tablet experience.

**The world's most secure 2-in-1**

Keep valuable data secure at all endpoints with industry-leading Dell Data Protection for comprehensive encryption, advance authentication and malware protection.

**Connectivity and Functionality**

The Dell Latitude 13 700 series comes equipped with a tablet fingerprint reader for easy, secure login as well as a dock with essential ports such as a mini DisplayPort and two USB 3.0 ports for plugging in important peripherals and getting the job done even faster.



- Intel®Core™ M processor (4MB cache, 800MHz)
- 4GB DDR3L SDRAM
- 128GB SSD
- Intel® HD Graphics 5300
- 10-point multi-touch screen

only **\$1026<sup>99</sup>** #13326982

**Make work a touch better**

**7" Samsung Galaxy Tab 4 Tablet**

Perfect for professionals on the move, Samsung's next-generation Galaxy Tab 4 line offers an exceptional multimedia experience in a more premium and portable design, making it ideal for viewing or sharing content with colleagues.

- Android 4.4 OS (1.20GHz)
- 8GB storage capacity • 1.50GB RAM
- 1280 x 800 high-definition touch-screen
- 3MP rear/1.3MP front-facing camera

only **\$173<sup>99</sup>** #13004924



**10.5" Samsung Galaxy Tab S Tablet**

The Samsung Galaxy Tab S elevates the user experience, drives engagement and improves productivity at levels never before seen in a tablet. Pick it up, and you'll immediately feel the difference that being the thinnest and lightest tablet in the world makes. It's an immersive, captivating experience that delivers richer, truer colors, and an experience that's second to none.

- Android 4.4 OS (1.90GHz)
- 16GB storage capacity • 3GB RAM
- Super AMOLED 1600 x 2560 display
- 8MP rear/2.1MP front-facing camera

only **\$499<sup>99</sup>** #13169226



*Integrated fingerprint reader for security.*

**12.2" Samsung Galaxy NotePRO Tablet**

Take your productivity to the next level on the large 12.2" display with the intuitive S Pen and enhanced multitasking, which allows you to use four different applications side-by-side. And stay more organized with Magazine Home, a home screen full of dashboards that update automatically. Now you can get to your favorite apps even easier with Bezel Slide. Simply swipe your thumb near the edge of the tablet to select your app.

- Android 4.4 OS (1.90GHz)
- 32GB storage capacity • 3GB RAM
- 2560 x 1600 display resolution
- 8MP rear/2.1MP front-facing camera

only **\$669<sup>99</sup>** #9904082



*Crystal clear HD display for viewing movies, images, files and a variety of interactive apps.*





# Get Work Done Anywhere

Share, collaborate, and work with clients, and colleagues like never before with Office 365 software that gives your business the capability to go above and beyond.

Enjoy high-quality teamwork tools anywhere and anytime.



### Go Mobile

Whether you're working in your office or on the go, you get a familiar, top-of-the-line set of productivity tools. Office applications let you create, edit, and share from your PC/Mac, iPad®, tablet, or phone with anyone instantly.



### Build Your Brand

Brand your business-class email address with your company name to build name recognition, and market your business with customized marketing materials that are easy to create with a range of tools.



### Set-up Fast

You can access the easy-to-use admin center from anywhere to manage all your services. And Office 365 takes care of IT for you, so your services are always up and running and up to date.



### Store All Your Files

With 1TB of storage per user, you'll have plenty of space for all your files. Plus, because your files are stored online, you can share with people in or outside your company, from wherever you're working, whenever you need.

## Microsoft Office 365 (Plan E3) subscription license

Get the most dependable office suite software you know and love along with email, video conferencing, file storage, and sharing, with enhanced communication tools and ultimate work-from-anywhere mobility.

**\$19<sup>99</sup>/month\*** #9775744

\*1-year subscription required



SAVE UP TO **33%**

# Adobe® Creative Cloud™ for Teams

## A better way of working together

Imagine if your team always had the latest tools. Imagine if they could save time by seamlessly sharing files and folders. That's Adobe® Creative Cloud™ for teams.

You get the entire collection of CS6 tools and exclusive updates, along with team-specific features that make working together—and managing licenses—easier than ever. All for one affordable price.

### The world's best tools

Equip your entire team with every Adobe® Creative Suite® 6 desktop application, plus Adobe Muse™, Photoshop®, Lightroom® 4, Acrobat® XI, Adobe Edge Tools & Services, and more. And everyone gets immediate access to new applications and features when they're released.

### Publish apps and websites

Explore new outlets for your content with the publishing services included with Adobe Creative Cloud.™ Create and host websites, deliver apps to the iPad device, and more.

### Share widely. Collaborate privately.

Now it's easy to keep everyone on the same page. Share files or folders with one person or with a larger team. The latest industry-leading security and encryption technology is built right in.

### The files you need. Where you need them.

Work on files at the office, from home, on your tablet. Just save to the Creative Cloud Files folder on your desktop, which includes 100GB per person, and start sharing between devices and team members, or with clients.

### Centralized administration

Manage and scale your team's software with centralized purchasing and license management tools. You and your designated administrators can quickly add, assign, or transfer seats, and track usage by team members.

**\$49<sup>88</sup>/month\*** #9430573

\*12-month subscription required



# Get multi-layered protection with Symantec software

Symantec Enterprise Solutions help you accurately identify and address risks while delivering strong data protection for mobile, endpoints, and mail/web infrastructure. Symantec Enterprise Solution combines products to protect against today's complex malware, data loss and spam threats with the fastest, most-effective endpoint security, drive encryption, and system recovery.


## Symantec is reducing complexity

By bundling our security solutions into a subscription model complete with support and maintenance that is attractively priced, Symantec simplifies license management and standardizes IT costs. There is no additional surprise with cost which allows for budget discussions to move from CapEx to OpEx classification. Symantec Enterprise Solution, one solution with 3 layers of defense to better protect your business and keep you compliant.

- 24x7 Support included with the bundled solution
- Easy, Flexible, and cost-effective management



- Maintains reliability of TrustedDWG technology
- Ideal for short or long term projects based on you needs
- Helps you manage your software expenses



**Protect Gateways**

Web Gateway  
Mail Security for Exchange  
Mail Security for Domino  
Messaging Gateway

**Protect Endpoints**

App Center Basic  
Client Management Suite  
System Recovery Desktop Edition  
Endpoint Protection  
Drive Encryption

**Protect Mail Systems**

*Endpoint management simplifies application patching across multiple platforms including Windows®, Mac OS® X, and Linux™.*

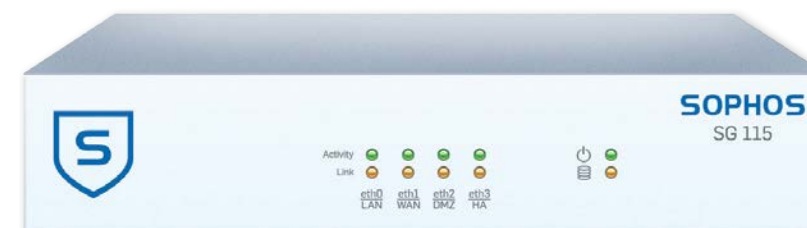
**Symantec Enterprise Solution License Subscription**

- 1-year license for multiple users
- Protects from malware, data loss, and spam
- Reliable endpoint security and drive encryption

only **\$77<sup>99</sup>** #13036162  
#13036165 Symantec Enterprise Solution 1-yr. Multi User

**\$61<sup>99</sup>**

# Safeguard your vulnerable network



**SOPHOS**

## Sophos SG115w TotalProtect 24x7

Sophos UTM TotalProtect combines purpose built, high-performance hardware with all the network security you need from next-gen firewall to secure Wi-Fi. All in a single appliance it simplifies your IT security without the complexity of multiple-point solutions. The intuitive interface helps you quickly control security risks and clear, detailed reports will give you the insight you need. Quickly protect your network using proven protection technologies including IPS, VPN, email and web filtering combined with the industry's simplest admin interface.

Protect confidential emails with email encryption and quickly harden your web servers and apps against attack with no training required for admins or web developers.

- Firewall, VPN, IPS, email, web filtering and app control
- Intuitive browser-based interface
- Built-in reporting on all models
- UserPortal allows spam management/ install VPN Clients
- Integrated wireless controller
- 3-year license

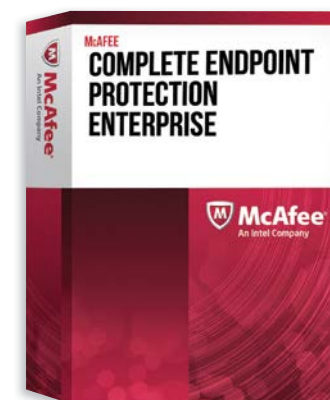
only **\$1020** #13347805



## McAfee Complete EndPoint Protection Business Upgrade License

McAfee Endpoint Protection provides continuous, updated, and powerful security against the entire spectrum of threats, from zero-day exploits to hacker attacks and so much more.

- 3 Years Gold Business Support
- Optimized for mobile devices and virtualized environments
- Reduces costs, helps maintain and prove compliance



only **\$79<sup>99</sup>** #9638988



## ESET Endpoint Antivirus Business Edition

Turn to ESET for a solution that takes the worry out of HIPAA, HITECH, PCI, SOX and GLBA compliance so you can focus on what matters: keeping the business running and serving clients and customers.

- 3 Years Gold Business Support
- Combines antimalware, antispam, two-way firewall, content filtering and remote administration

only **\$37<sup>99</sup>** #9232821

# Give your audience a picture perfect experience every time

SAMSUNG



The SMART signage TV comes with software to add your own promotional content and messaging, that you can control from your PC or mobile phone.

## The all-in-one digital display

### Samsung 40" 1080p SMART Signage TV

The Samsung SMART Signage TV gives you a 40" or 48" high definition, professional grade TV, along with the capability for so much more. With the included software, you can add your own promotional content, and control it all from your PC or mobile phone. It's a solution designed to make your organization better and a solution designed for you. Create New Opportunities.

- 1080p Full HD Display
- 1920 x 1080 native resolution
- Mounting Hardware and Software included
- 200+ Templates Included to Create Your Own Content
- Manage Content with Your PC or Mobile Device

only **\$749<sup>99</sup>** #13288408

ViewSonic®



## Slim and stylish for any size workspace

### 22" ViewSonic VA2246m

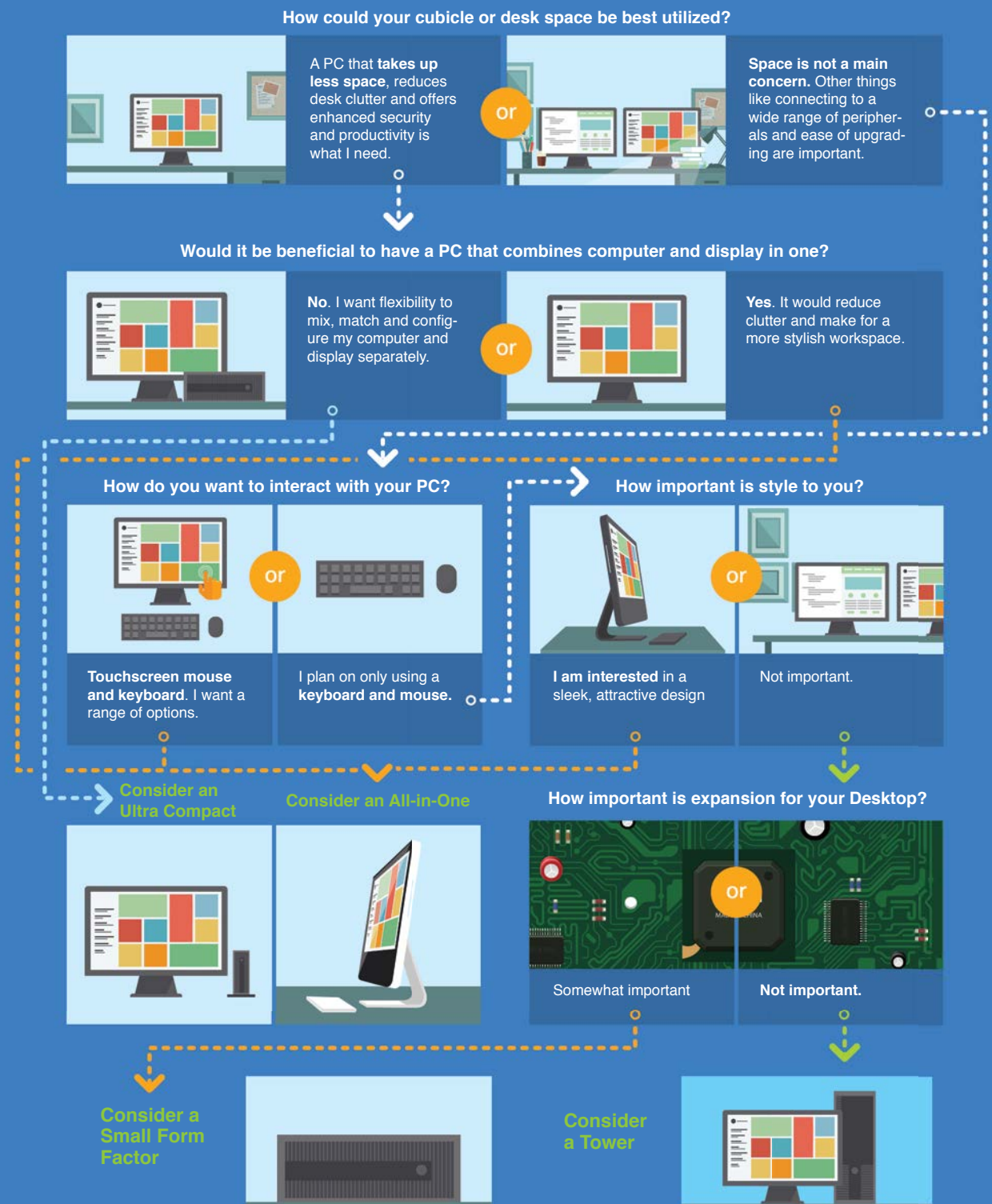
You'll experience the most amazing clarity and detail whether it be while working, gaming, or enjoying the latest in multimedia entertainment. A 16:9 widescreen ratio minimizes eye fatigue even after hours of viewing and is perfectly compatible with multi-window viewing without toggling.

- 22" LED-backlit LCD monitor
- Full-HD 1920 x 1080 native resolution
- 5ms response times

only **\$128<sup>99</sup>** #9673211

# Find Your Ideal Device

Looking to increase your productivity with performance and security?  
Follow the arrows to find the best device for your needs



# Exceed your expectations

Experience speed, security, and power

## HP Pro 3500

Running an organization or just simply working from home requires you to have a PC that is dependable and allows you to work flawlessly and without delay. Introducing the HP Pro 3500. This desktop comes pre-installed with Windows® 7 but you can have it upgraded to Windows® 8. It also comes with the latest third-generation processors as well as HD Graphics for your high-caliber visuals. Take advantage of the HP 3500 desktop's three PCI Express x1 and one PCI Express x16 slot for better performance to suit your organization's needs.



HP Pro 3500 will come with Norton 60-day trial anti-virus software and a limited 1-year warranty.

- 3rd gen Intel®Core™ processor (6MB cache, 3.20GHz)
- 4GB DDR3 SDRAM • 500GB HDD
- Intel® HD Graphics 2500 Dynamic Video Memory
- DVD±RW SuperMulti

only **\$593<sup>49</sup>** #9528133



## HP ProDesk 600 G1

- 4th gen Intel® Core™ i5 processor (6MB cache, 3.30GHz)
- 4GB DDR3 SDRAM
- 500GB HDD
- DVD±RW SuperMulti
- Windows® 7 Pro 64-bit and Windows® 8.1 Pro downgrade

only **\$709<sup>99</sup>** #13259110

The HP ProDesk 600 G1 is ENERGY STAR® certified for running clean with low-energy consumption.



## HP EliteDesk 800 G1

- 4th gen Intel® Core™ i7 processor (8MB cache, 3.60GHz)
- 4GB DDR3 SDRAM
- 500GB HDD
- DVD±RW SuperMulti
- Windows® 7 Pro 64-bit and Windows® 8.1 Pro downgrade



only **\$859<sup>94</sup>** #13241957

## HP ProDesk 600 G1

- 4th gen Intel® Core™ i5 processor (6MB, 2GHz)
- 8GB DDR3 SDRAM
- 500GB hybrid HDD
- Intel® HD Graphics 4600
- DVD±RW SuperMulti
- Windows® 7 Pro 64-bit and Windows® 8.1 Pro downgrade

only **\$703** #13244253

# Boost your efficiency

**lenovo** FOR THOSE WHO DO.

## Lenovo ThinkCentre E73 10AS

Designed to boost productivity and improve data protection, two of the most important qualities of any high-class desktop, the ThinkCentre E73 uses the latest Intel® Core™ processors and sufficient RAM ensures speedy, reliable performance, while Lenovo technology keeps critical files safe from unauthorized access.

### Storage and Security

With a 500GB hard drive, this ThinkCentre desktop offers ample storage space for documents, photos, and videos. Security features such as USB port disablement and password protection for the BIOS and hard drive prevent security threats caused by unauthorized access. Built-in Lenovo utilities also make data backup and recovery more convenient.

- 4th gen Intel® Core™ i3 processor (3MB cache, 3.40GHz)
- 4GB DDR3 SDRAM
- 500GB HDD
- Intel® HD Graphics 4400

only **\$454<sup>99</sup>** #9838057



Pre-installed power manager lets users tweak power usage settings to boost energy efficiency and lower overall power costs.

## Lenovo ThinkCentre M73 10B6

The Lenovo ThinkCenter M73 desktop delivers consistent speed and performance. The desktop's antenna design allows for significantly improved reception of wireless signals, making for faster, more stable Wi-Fi connections. USB 3.0 ports also help you transfer data up to 10 times more quickly than USB 2.0, ensuring convenient file access and backup.

- Intel® Core™ i5 processor (6MB cache, 3.20GHz)
- 4GB DDR3 SDRAM
- 500GB HDD
- Intel® HD Graphics 4600
- Windows® 7 Pro 64-bit / 8 Pro 64-bit downgrade

only **\$584<sup>99</sup>** #9800484



## Lenovo ThinkCentre M93p 10AB

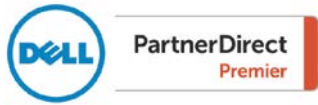
The Lenovo ThinkCentre M93p is designed to integrate big system demands and specs for corporate settings. The first 1L desktop to come out in the market, this desktop comes with an adjustable mount—including support for any standard VESA mount. It can fit in any office setting that requires reliability, data security and high power.

- Intel® Core™ i5 processor (4MB cache, 2.90GHz)
- 4GB DDR3 SDRAM
- 500GB HDD
- Intel® HD Graphics 4600
- Windows® 7 Pro 64-bit / 8 Pro 64-bit downgrade



Equipped with USB port disablement to prevent data theft and network security dangers

only **\$584<sup>99</sup>** #9738664



# Out-of-sight power.

Put big power in unexpected places with the compact, secure and manageable new OptiPlex 9020 Micro PC.

## Powerfully Efficient. Perfectly Compact.

Put big power in unexpected – or even hidden – places with the compact new OptiPlex 9020 Micro desktop, featuring Intel® Core™ processors. It offers hardware for secure mounting behind a monitor, under a desk or on the wall. Big jobs are a breeze with support for up to three monitors. And like the rest of the OptiPlex family, this new micro PC delivers the fully secure, centrally managed and reliable experience you expect from Dell.



### Dell Data Protection –Encryption–

This optional feature protects your data across all endpoints, including external media, self-encrypting drives and in public cloud storage.

### Dell Data Protection –Security–

Pre-installed software provides security and identity protection through authentication support for Windows passwords, fingerprint readers and self-encrypting drives.

### Multi-display Support

Support up to three monitors with the OptiPlex 9020 allowing for high quality, fast processing on multiple screens at a time.

*High processing speed lets you switch between projects seamlessly without slowing down your OptiPlex Micro.*



## Dell's smallest OptiPlex

This new micro chassis design has a displacement of just 1.2 liters.

### Multiple mounting options

Available mounting options allow for placement on the wall, under the desk or in VESA or dual VESA installations.

- 4th gen Intel® Core™ i7 processor (8MB cache, 2.20GHz)
- 1600MHz memory speed
- 8GB DDR3 SDRAM
- 128GB SSD
- Intel® Turbo Boost Technology
- Microsoft Windows® 7 Professional 64-bit with Windows® 8.1 Professional License

only **\$834<sup>99</sup>** #13274541

# Compute from almost anywhere



Wireless networks have become standard in the rapidly transforming IT industry. Fifteen years ago, the ability to walk around holding a miniature computer with complete and total access to everything the internet offers was not possible. Today, we have all these capabilities and more – on a device that can fit on your wrist. The possibilities are endless, and this is just the beginning.

## Wireless is the key to mobility

Wireless networks are highly visible in agencies today. Mobility has done more than just allow users to extend their workplace – it's also freed them to deliver better service from practically anywhere at any time through mobile devices. In order to support a robust mobile infrastructure, your agency needs a strong, secure wireless network. Enterprise-grade wireless routers and access points provide the backbone for your Wi-Fi network and give you total control over its stability and security. With the flexibility to move from cubicle to conference room, to collaborate with others, to the fresh air outdoors – staying connected is key to the productivity of your agency.

As the number of devices grows exponentially with laptops, tablets, and smart phones – plus the growing trend with BYOD adding non-standard devices and operating systems to the IT environment – wireless connectivity has grown in demand and complexity. More and more workers are using wireless networks as their primary access, any disruption or challenge accessing the network can have a serious impact on productivity, which can also result in loss of funds.

## What are the wireless options?

The future of our growing technological world is wireless access for the majority of agencies, and there are plenty of options in the market that wireless vendors

are promoting; distributed vs. centralized, controller vs. controller-less, and cloud hosted vs. cloud managed. It can be difficult to be up-to-date with all the upcoming trends and challenges to make the right decision knowing the uncertainty of technology as it matures. PCMG is changing the conversation about wireless services, and how they're delivered to the Enterprise. The PCMG Cloud Wireless Service offering is a cloud-based managed enterprise-class Wi-Fi solution that enables agencies to easily deploy an enterprise-wide Wi-Fi network without the complexity and costs of traditional networks.

## The right Wi-Fi solution for you

Our wireless solution includes a site survey, consulting, and implementation to properly determine the coverage requirements for each location. PCMG will work to ensure that your equipment is properly installed, even if a physical installation is necessary. Once the equipment is installed, PCMG Cloud Wireless Service maintains management and controls systems for each user contained on dedicated virtual machines.



## PCMG is ready to help

Trusted by customers for more than two decades, PCMG provides complete solutions with the required technology, installations, and Support Services to provide your agency with the highest levels of expertise coupled with unmatched professional oversight and management of your IT operations. ■

Contact your PCMG Account Executive today!

**1-800-625-5468 | www.pcmg.com**

# Increase capacity without compromising performance

## HP 3PAR StoreServ All Flash Array

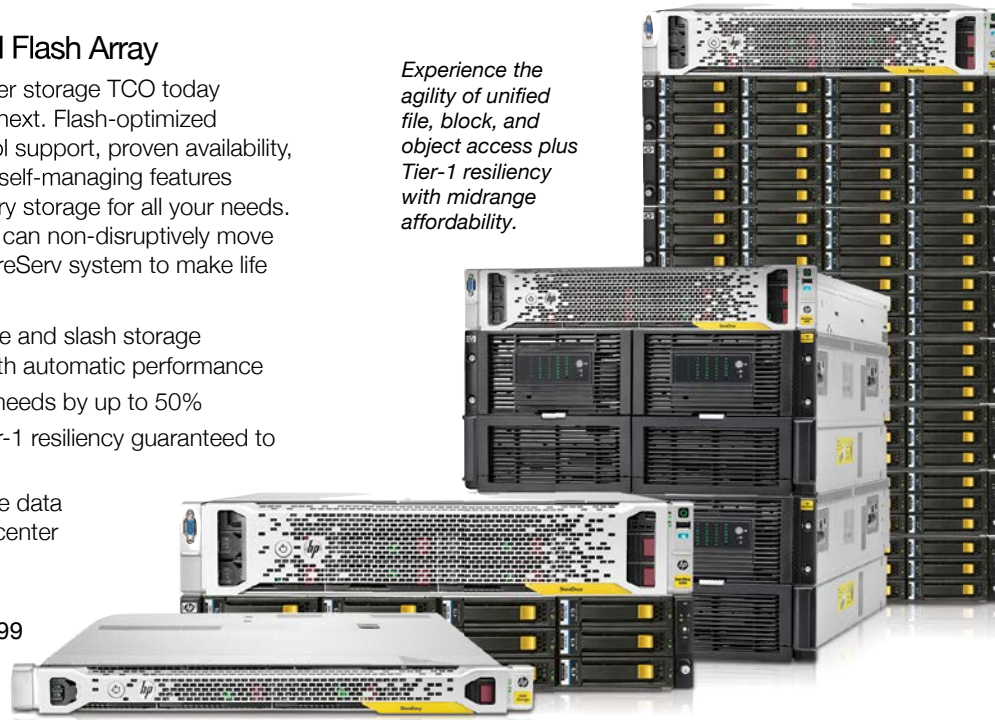
HP 3PAR StoreServ can lower storage TCO today and enable agility for what's next. Flash-optimized performance, unified protocol support, proven availability, and Thin Deduplication plus self-managing features reduce complexity. It's primary storage for all your needs. With storage federation, you can non-disruptively move data between any 3PAR StoreServ system to make life easy down the road.

- Eliminate the learning curve and slash storage management overhead with automatic performance
- Reduce storage capacity needs by up to 50%
- Experience multitenant Tier-1 resiliency guaranteed to double your VM density
- Federated, simple, risk-free data mobility across your data center

As low as  
**\$41,999<sup>99</sup>** #13345699

This offer is not available online. Please call your PCMG Account Manager for more information.

*Experience the agility of unified file, block, and object access plus Tier-1 resiliency with midrange affordability.*



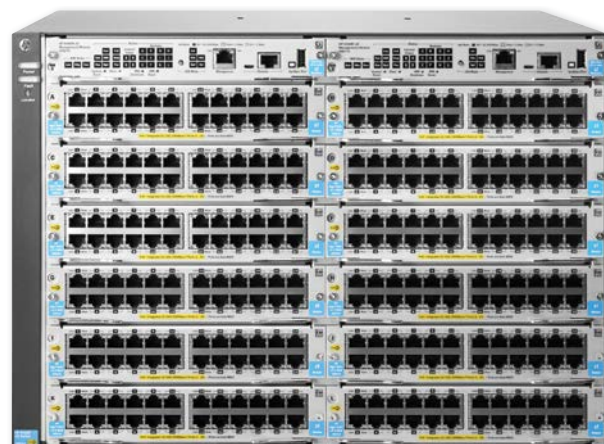
## Experience enterprise-class resiliency

### HP 5412R z12 Switch Rack Mountable

This next-generation modular switch is designed for enterprise edge, small to medium organizations, and branch office core deployments. With high levels of

resiliency and unprecedented flexibility, scalability and ease of use, the 5400R supports demanding network features such as hitless failover, power supply and management redundancy, QoS and security with full L3 features. Robust virtualization with HP AllianceOne solutions and flexible connectivity including 10 Gigabit Ethernet and full PoE+, the 5400R requires no add-on software licensing and is SDN ready with OpenFlow support.

- 7U rack-mountable switch
- 785.7Mpps throughput performance
- 4GB RAM, 1GB flash memory
- PoE+ power for 288 ports, internal power supplies
- SDN Ready with OpenFlow support
- Lifetime hardware warranty, 3 years 24x7 phone support



*Hot-swappable modules and optional redundant power supply provides uninterrupted power with no impact on the network.*

only **\$3689<sup>99</sup>** #13285977



# Cisco offers performance, density, and complete stability

## Cisco UCS B200 M4 Blade Server

The UCS B200 M4 Blade Server is built with the Intel® Xeon® E5-2600 v3 processor family, up to 768GB of memory (with 32GB DIMMs), up to two drives, and up to 80Gbps total bandwidth. It offers exceptional levels of performance, flexibility, and I/O throughput to run the most demanding applications.

- Suitability for a wide range of applications and workloads
- Highest-performing CPU and memory options without constraints in configuration, power or cooling
- Half-width form factor offering industry-leading benefits
- Latest features of Cisco UCS Virtual Interface Cards (VICs)

only **\$1299<sup>99</sup>** #13286197

## Advanced cloud networking architecture: Welcome to the powerful, reliable, plug-and-play access platform

### Meraki Cloud Managed Switch MS220-24P

The Cisco Meraki MS220-24 has pre configured switches for zero-touch deployment and contains rogue DHCP servers. The MS220-24 identifies and locates switch ports, identifies bandwidth hogs with locked down switch access.

- Includes 370 W PoE/PoE+
- Voice and Video QoS Visibility and control over thousands of ports
- Built-in multi-site management
- Real time trouble shooting tools



only **\$1879<sup>99</sup>** #9884686

*Ongoing feature upgrades and enterprise support are included.*



### Meraki MS Series 22 Subscription License

Enterprise 3-year License and Support. Ideal for network administrators who demand both ease of deployment and a state-of-the-art feature set.

- Built-in multi-site cloud management and monitoring
- Switch is automatically monitored from the cloud
- Alerting tools to notify administrators of downtime and configuration changes
- Rich web-based diagnostics for troubleshooting

only **\$257<sup>99</sup>** #9901410

# End of support for Windows Server 2003



Can have a dramatic impact on your organization.

## Transform Your Datacenter

The end of support for Windows Server 2003 could signal the beginning of a new stage in your organization's evolution.

A **datacenter without boundaries gives** you the ability to go beyond the resources you have on-premises by more easily accessing cloud resources when you need to. Take advantage of cloud resources to build new applications or websites that require global scale in a snap; scale infrastructure at a moment's notice to meet the most demanding organizational requirements; and reduce storage, backup, and recovery costs.

Once you see what's possible with cloud capabilities, your organization will want to take advantage of **cloud innovation everywhere**. The innovations built into Microsoft datacenter products—especially in storage, networking, and identity—are the result of the deep experience and expertise Microsoft has gained from working with massive-scale enterprise cloud deployments.

Your organization can take advantage of Microsoft's world-class infrastructure with **dynamic application delivery**, so your IT professionals can respond to organization's needs with greater speed and agility.

## Follow a migration process

Your migration should ideally follow a process to make the transition from Windows Server 2003 to the cloud as smooth as possible. That process will include discovering,

assessing, and targeting workloads and software before choosing the right migration plan.

## Discover

The first step is to discover and catalog all of the software and workloads running on Windows Server 2003. There are several self-service tools that can help with this process, such as the Microsoft Assessment and Planning (MAP) Toolkit, a free tool that helps you collect and organize system-wide information from a single, networked computer.

## Assess

Once you have a catalog, you will need to assess what's in it. This means categorizing and analyzing your cataloged applications and workloads based on type, criticality, complexity, and risk.

## Target

Choose a migration destination for each application and workload. Available options include Windows Server 2012 R2, Windows Azure, Cloud OS Network, and Office 365.

## Migrate

Choosing the right migration plan may require some additional analysis and assistance. Several vendors offer do-it-yourself tools to assist in the decision-making process and in the migration itself, including Dell ChangeBASE, Citrix AppDNA, AppZero, BlueStripe, and Microsoft Services JumpStart for Windows Server 2003.

Microsoft will no longer develop or release any critical system updates after ending support. After support ends, your organization will likely fail to meet most industry-wide compliance standards and regulations which could result in loss of productivity or high transaction fees and penalties. The costs of maintaining your legacy servers will also add up quickly because maintenance of aging hardware will likely increase in regards to costly advanced firewall and intrusion detection systems.

## Get your critical software up to date



### Microsoft Windows Server 2012 R2

- Single Language, 2 processor license
- Microsoft open license
- Minimum 32GB hard drive space required

only **\$831<sup>99</sup>** #9833411



### Microsoft Azure

- 1 year subscription
- Premium cloud computing software
- Microsoft open license

only **\$95<sup>99</sup>** #13243274

\*1-service credit, pricing per service varies



### Microsoft Office 365

- Updated Microsoft 365 software
- Microsoft open license

**\$19<sup>99</sup>/month\*** #9775744

\*1-year subscription required

## Unmatched Capacity and Reliability



### HP ProLiant ML350 Gen9

The HP ProLiant ML350 Gen9 Server delivers a class-leading combination of performance, expandability, manageability, reliability and serviceability making it the choice for expanding organizations, remote offices, and data centers. Get a 70% performance gain, plus the latest HP DDR4 SmartMemory offering a 14% performance boost.

- 6-core, 1.90GHz Intel® Xeon® E5-2609V3 processor
- 5U, 2-way tower server with 8 hot-swappable bays
- SATA-600 and SAS 3.0 interface
- 2 x 300GB 6G SAS 10K 2.5" SC Enterprise Hard Drive

only **\$2419<sup>99</sup>** #13345838

Supports up to two Intel® Xeon® processor E5-2600 v3 processors.



Up to 40Gb Networking with new InfiniBand options.

### HP Smart Buy ProLiant DL380 Gen9

The HP ProLiant DL380 Gen9 Server has a flexible redesigned chassis, including new HP Universal Media Bay configuration options with 8 to 24 Small Form Factor and 4 or 12 Large Form Factor drive options; with additional rear drive support for expandability.

- 2 x 10-core, 2.30GHz Intel® Xeon® E5-2650V3 processor
- 2U, 2-way rack-mountable server
- 32GB RAM • 24 hot-swappable bays
- 4 x 600GB and 2 x 300GB HDD storage capacity

only **\$6589<sup>99</sup>** #13345839

## Flexible high-density compute performance

### HP ProLiant DL360 Gen9

HP's leading server for dense general-purpose computing, the HP ProLiant DL360 Gen9 Server delivers increased performance with the best memory and I/O expandability packed in a 1U dense rack design. Reliability, serviceability and always on availability, backed

by a comprehensive warranty, make it ideal for the most space constrained server workloads.

- 2 x 2.50GHz 12-Core Intel® Xeon® E5-2680v3 processor
- 1U, 2-way rack-mountable server • 64GB RAM
- 8 hot-swappable bays • 2 x 80GB SSD



only **\$6899<sup>99</sup>** #13269427

# SAN Storage & You

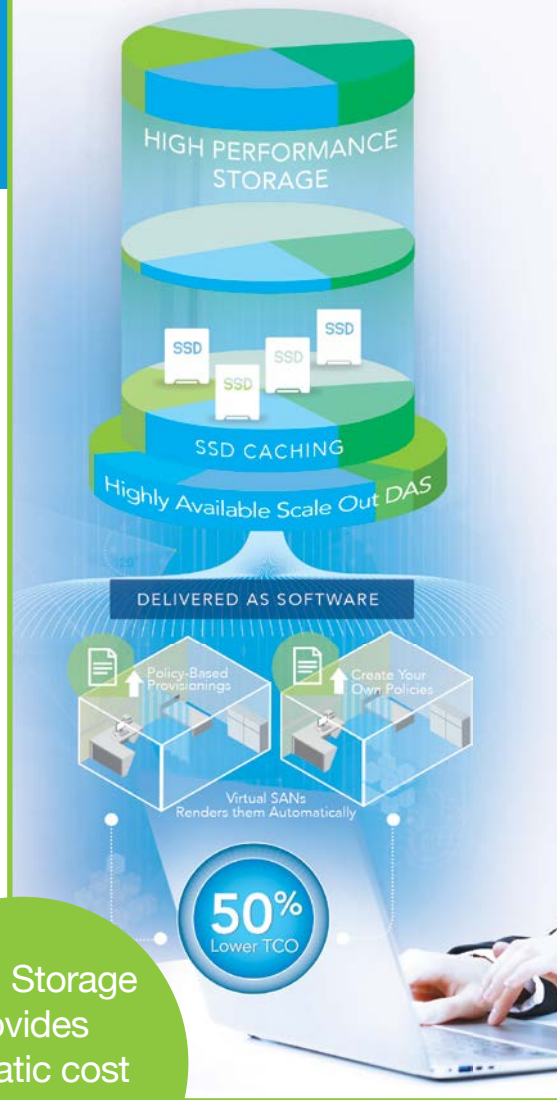
**Retention gives us, as humans, the ability to easily access the things we've learned.** Our brains acquire information and constantly continue to reorganize and optimize the storage that we have.

We connect new ideas with old information, giving us easier points of access to the things we've learned in our lifetime. Our information is rarely lost, but sometimes it's hard to find what we need. The human brain is an incredible tool, it's no wonder we have the capacity to create all of the things we have. We've found ways to build electronic devices for storing and processing data in a binary form, networks that allow millions of computers and billions of people to exchange data in near real time, and we've created technology to record and retain near infinite amounts of content for as many years as the hardware exists. We can even store it all in an intensely secure virtualized warehouse in the Cloud.

With virtualization being foundational to most data center strategies, it was only a matter of time until we broke the physical chains that coupled virtual servers to physical storage. Virtual SAN – a storage virtualization solution from VMware – runs on x86 hardware and turns typical HP, Dell, and Cisco servers with directly attached storage into highly scalable, great performing platforms for both compute and storage. Built to simplify and streamline storage management, Virtual SAN abstracts and pools server-side flash (SSD) and hard disk drives (HDD) into shared pools of capacity and provides policy-based management and application centric data services.

**There are some major benefits to virtualizing storage with a program like Virtual SAN:**

- **Migrating data while maintaining concurrent I/O access:** the process is non-disruptive and accommodates IT and employees by not disrupting workflow.
- **Improved Utilization:** This allows users to avoid over-buying and over-provisioning storage solutions. Sharing a pool of storage can be quickly and easily allocated as need be.
- **Fewer Points of Management:** Traditional storage management is still required. However by using a single monolithic device, the storage device can be easily managed.



Virtual Storage provides dramatic cost & performance flexibility.

**Storage virtualization is quickly gaining traction for these reasons:**

- **Simplicity** - of automating storage operations from provisioning to reclamation.
- **High Performance** - in many cases, the ability to provide performance near parallel to that of a much more complex SANs running all Solid State Disks (SSD). Virtual SAN is capable of 2 Million IOPS and will cost less than half the price of a similarly performing SAN.
- **Lower TCO** - Virtual Storage provides dramatic cost and performance flexibility with low up front investment requirements, granular scaling, higher resource utilization and significantly lower operational costs. It's typical to see a 50% Total Cost of Ownership (TCO) and 2x-5x lower operational costs (OPEX) when incorporating Virtual Storage into your Data Management Strategy.

With more than a decade of experience delivering and managing virtualization solutions for our customers, PCMG will help you navigate an ever changing IT environment, delivering best-in-class service.

**Contact your PCMG Account Executive today** to gain access to the highest quality technology, industry leading partners, and exceptional service.

**1-800-625-5468 | www.pcmg.com**

## Rejuvenate Layer 3 networking Dell Networking N3000 Series 1GbE Layer 3 switches



Dell Networking N3000 is a series of energy-efficient and cost-effective 1GbE switches designed for modernizing and scaling network infrastructure. N3000 switches utilize a comprehensive enterprise-class Layer 2 and Layer 3 feature set, deliver consistent, simplified management and offer high-availability device and network design. The N3000 switches offer a power-efficient and resilient Gigabit Ethernet (GbE) switching solution with integrated 10GbE uplinks for advanced Layer 3 distribution.

**N3024**  
24x 1GbE RJ45 auto-sensing  
(1Gb/100Mb/10Mb) fixed ports

only **\$2339<sup>99</sup>** #13153085  
#13220815 N3024P 24x 1GbE RJ45 auto-sensing  
#13220820 N3024F 24x 1GbE SFP auto-sensing

**\$2829<sup>99</sup>**  
**\$3729<sup>99</sup>**

## More performance, less investment. Dell Storage SC4020 All-in-one SAN array

Why should you choose between cost and maintaining a competitive advantage when you can get the best of both? The new Dell Storage SC4020 delivers high-performance storage with enterprise-class features for organizations of all sizes.

With flash-optimized, 100 percent SSD or hybrid SSD/HDD arrays, you can purchase fewer, less expensive disks

now and easily increase storage as your organization expands. The fully optimized flash solution accelerates critical Oracle® workloads, boosting OLTP performance up to 129k IOPS<sup>1</sup> with less than 1ms of latency,<sup>2</sup> allowing you to stay focused on keeping critical intelligence readily accessible.



1. Based on Dell internal testing at Dell labs using Oracle ORION toolkit in March 2014. Performance shown indicative of 12 WI drives. Oracle workload performance will vary depending upon workload I/O profile and SC4020 drive configuration, usage and manufacturing variability.  
2. Based on Dell internal testing at Dell labs using Oracle ORION toolkit in March 2014. Performance shown indicative of 6 WI drives. Oracle workload performance will vary depending upon workload I/O profile and SC4020 drive configuration, usage and manufacturing variability.

## PowerEdge VRTX Integrates servers, storage, networking and management into a single chassis

PowerEdge VRTX is a powerful, scalable, easy-to-manage solutions platform, optimized specifically for office environments. Clear up the complexity of disparate hardware, multiple management tools, and hardware sprawl with an optimized platform that integrates up to four PowerEdge M-series server nodes, storage, networking and management into a compact 5U chassis.

### Call for Price #9800920

#9800921 PowerEdge VRTX M520 Xeon E5-2420  
#9800923 PowerEdge VRTX Rack Chassis  
#9800922 PowerEdge VRTX M620 Xeon E5-2609



Call 1.800.625.5468 or visit [pcm-g.com](http://pcm-g.com)





# Benefit from Exadata power

Give your database protection and strength in an easy-to-deploy solution



The Oracle Exadata Smart Combo delivers Exadata power and impressive performance along with high bandwidth ZS3 storage for backup plus data protection options for your database. It's a complete, ready-to-go solution that saves you power, floor space, and integration costs while providing low TCO and ultra-fast performance for all of your users and backup processes.

- Fastest possible backup and recovery for Exadata with ZS3 storage
- Highly Available Database and Disaster Recovery
- NO more Database to Storage tuning
- Run Database queries FASTER
- Analyze Data warehouses FASTER
- Lower TCO with pay as you grow (from 1/8th rack)
- Faster ROI



## Oracle's Database Appliance is a fully redundant integrated system designed to save you money

JD Edwards EnterpriseOne software, optimized for the powerful Oracle engineered system, gives you the complete IT solution for your organization.

### The Oracle Database Appliance

An integrated solution of database and system software, server, storage, and networking, the Oracle Database Appliance is engineered to work together, in a single package that is simple to install and manage.

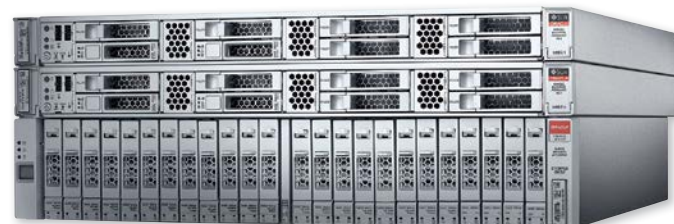
### Oracle's JD Edwards EnterpriseOne

This software suite of 80 enterprise resource planning applications combines value, standards-based technology, and deep industry experience to offer comprehensive solutions with low total cost of ownership.

### Oracle Real Application Clusters

Ensures database availability by removing the database server as a single point of failures. Real Application Clusters reduce downtime and maintain continuity.

The Smart Combo's cost-effective to run with integrated one-click patching and maintenance, plus savings on floor space and power consumption which frees up budgets.



*The Flexibility Model*  
With the capacity-on-demand database software licensing model, you only pay for what you need.

# Experience ultimate server reliability



## Lenovo ThinkServer TS440 70AQ

The ThinkServer TS440 is a true high-class server. Thanks to the increased performance of the powerful processors, the TS440 has the power and speed to handle your workload with ease. To help keep you up and running and your data safe, the TS440 includes reliability features such as error correcting code (ECC) memory and an onboard storage controller with the capability of implementing RAID. You can also choose between enterprise SAS or SATA hot-swap drives. Plus, the TS440 is designed for 24/7 operation and is certified for MSP support with many ecosystem vendors.

- Intel® Xeon® processor E3-1225V3 (8MB cache, 3.20GHz)
- 4GB DDR3 SDRAM ECC
- ThinkServer RAID 100
- Intel® HD Graphics P4600



only **\$699<sup>99</sup>** #9783862

## Lenovo ThinkServer RD340 70AB

With its conveniently slim, 1U design, the RD340 ThinkServer desktop houses two Intel® Xeon® E5-2407 processors that can support up to 2.40GHz of data, making it an integral part of any network. It also integrates other useful features such as hot-swap hard drives and RAID technology for more scalable options, and system efficiency that lets the ThinkServer RD430 run consistently without too much lag or system errors. Take advantage of scalable and efficient server equipment for your operations.

- Intel® Xeon® processors (10MB cache, 2.40GHz)
- 8GB RAM DDR3L SDRAM
- 1U slim rack-mountable server
- LED panel
- 8 hot-swappable hard drives



only **\$829<sup>99</sup>** #9904157

## Lenovo ThinkServer RD640 70AY

Virtualization is an extremely effective way to reduce IT expenses while boosting efficiency and agility. Ideal for robust virtualization, the ThinkServer RD640 rack server features 24 hours' performance, numerous I/O upgrades, and large memory bandwidth, so you can roll out your virtual machines with confidence.

- Intel® Xeon® processor E5-2620V2 (15MB cache, 2.10GHz)
- 8GB DDR3 SDRAM ECC
- ThinkServer RAID 700

only **\$1349<sup>99</sup>** #9832859

# Evolution and Trends of Virtualization Technology



Virtualization software has rapidly transformed the IT landscape and has fundamentally changed the way people compute. Our servers, storage devices and networks have been transformed and 'virtualized' from physical and tangible artifacts to mere 'files' sitting atop a thin layer of software called a hypervisor. Decoupled from the physical world, these compute resources and virtual machines can be dynamically allocated with just a few clicks and keyboard strokes.

(aka Hybrid Cloud) combines the advantage of scalability and cost-effectiveness that a public cloud computing environment offers, without exposing critical applications and data to third-party vulnerabilities. Adopting hybrid architecture provides you with complete control over your cloud environment, higher security and privacy control, the ability to react and evaluate outages, man-made issues or natural disasters, and will often provide additional budgetary flexibility.

### Virtual Machine means no hardware

The operating system can't tell the difference between a virtual machine (vm) and a physical machine, nor can applications or other computers on a network. Virtual machines think and act like a "real" computer, but since VMs are composed entirely of software and contain no hardware components they offer a number of distinct advantages over physical hardware. VMs can be copied, replicated, migrated and even scripted; they are after all merely files sitting on a layer of software.

### A new wave of VM

With the rapid pace of technological change becoming commonplace, it is only expected that new breakthroughs will continue to push boundaries. So what's next? We are likely to see the wide spread adoption over the next couple years of both automated and virtualized networks, security and even virtualized operations. Both virtualization and automation have become a necessity, both for driving down costs and enabling us to operationalize our ability to deliver new services at an ever-increasing pace. But the biggest change might just be a completely new approach.

### A variety of advantages

Virtualization began in 1960 with mainframe computers, to methodically and logically divide the system's resources provided by mainframes between different applications. IBM began this work in 1964, but the full adaptation of server virtualization wasn't until 1999 when VMware introduced their VMware Virtual Platform to the market. VMware found a way to completely virtualize an IT's hardware infrastructure. The advantages brought on by virtualizing technology are more impactful than ever before. Virtualization has enabled IT to more effectively deal with shrinking IT budgets, scarcity of resources, the need for operational flexibility, energy conservation, and dramatically increased information security. If your agency has already taken the leap into virtualization, what's next on the horizon?

### Adopting the new approach

Companies like Docker and CoreOS, with their recently announced Rocket container technology are quickly gaining attention and trying to plant a flag both in your data center and in the cloud. In some ways the approach is almost anti-virtualization. The intent is to provide a self-contained platform for building, shipping and running distributed applications. Essentially providing applications or portions of an application packaged in self-contained lightweight containers that run independent of either a physical or virtual platform. After all, who really needs those virtual servers, storage or networks - what we really care about is the application.

**Contact your PCMG Account Executive today** to gain access to the highest quality technology, industry leading partners, and exceptional service.

1-800-625-5468 | [www.pcmg.com](http://www.pcmg.com)

### Hybrid offers complete control

For many organizations, developing a hybrid cloud strategy is the next logical step. Bridging your virtualized data center with the public cloud

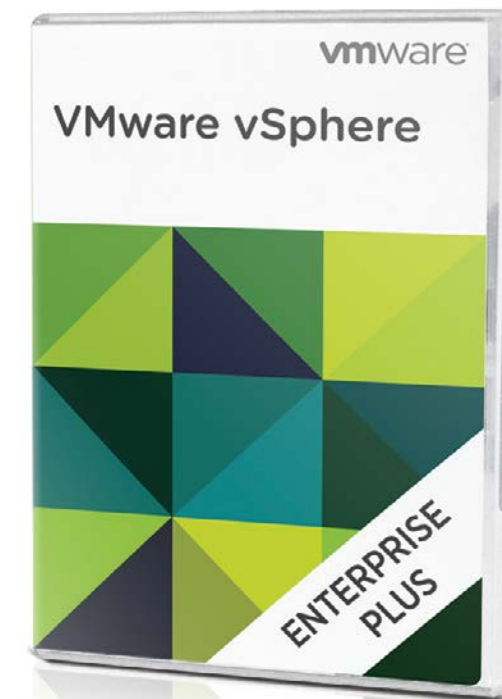
# VMware helps you take advantage of the cloud

vmware®

## VMware vSphere 5 Enterprise Plus

The best platform for building out cloud infrastructures. VMware vSphere Enterprise Plus includes the full range of vSphere features for transforming data centers into dramatically simplified cloud computing environments providing the next generation of flexible, reliable IT services for your organization.

- Reduce capital and operating costs by over 50%
- Simplify the operational management of large virtualization deployments for your organization
- Integrate across a broad range of hardware, operating systems, application stacks, and service providers
- License available on one processor



only **\$3229<sup>99</sup>** #8851284

## VMware vSphere 5 Standard

VMware vSphere 5 standard is the premier server consolidation and continuity solution.

- Virtualize your x86 server resources and aggregate them into logical pools for allocation of multiple workloads
- Get network services optimized for the virtual environment, along with simplified administration and management
- Reduces the complexity of back-end storage systems



~~\$995~~ **\$895<sup>99</sup>** #8851032

## VMware vSphere 5 Enterprise

VMware vSphere 5 Enterprise is the ideal software for your organization's resource load balancing.

- Protect your data and applications with the industry's most secure "bare-metal" server virtualization platform.
- Maximize uptime across your cloud infrastructure, reducing unplanned downtime and eliminating planned downtime for server and storage maintenance
- Lowers your operating expenditures



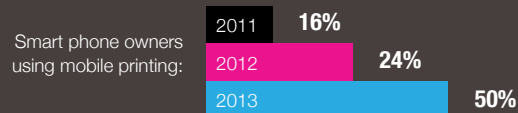
~~\$2875~~ **\$2659<sup>99</sup>** #8851072

# The Future of Printing is Mobile



> 50%

More than 50% of mobile device users now print the same amount or more photos.

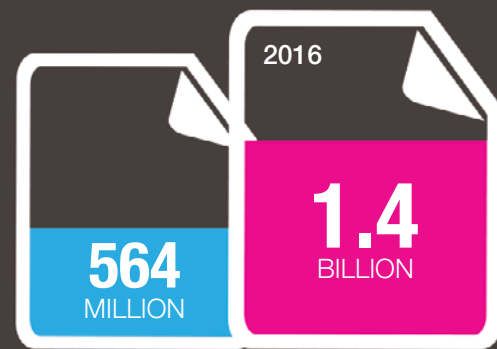


While mobile devices have become ubiquitous, mobile printing has not.

## WHY?

50% of the mobile device users don't know how

Most mobile printing solutions lack compatibility with other printers and mobile devices.



## MOBILE DEVICE OWNERS

The more mobile users there are, the greater the need to print will be.

## WHY THEY WANT TO PRINT

Shift to working on tablet/smartphones; increased travel; increase in workload and responsibilities.



## WHAT THEY WANT TO PRINT

Boarding passes, Coupons, Tickets, Itineraries, Hotel Reservations, Homework and Office Documents.



# There's still an area of your organization where you can save millions.

Agencies can **save up to 30%** of operating costs by better managing the volume of documents flowing through the organization.



## Did you know?



The average employee prints \$520 worth of documents every year. Imagine how much that costs your organization on an annual basis. Add to that network drops, maintenance costs, help desk calls, etc.



Most organizations underestimate what they spend by 30-40 percent



The average employee spends 250-400 hours per year on unnecessary print related issues



Changing the way your organization prints also gives employees new ways to work efficiently

- To get invoices processed
- To communicate more efficiently within the office

## Why Managed Print Services?



When organizations optimize their print environment to cut \$\$\$ and be more efficient, they also reduce output related environmental impacts:

- Power usage
- Carbon production
- Power consumption
- Landfill waste



Employees are printing less content than they used to, but the amount of content available for an employee is growing exponentially. So despite efforts to go paperless, the amount of pages being printed is actually doubling every 3.5 years!



The average office generates 2lbs of paper waste every day



The average American organization has roughly one output device (printer, copier, scanner, fax) for every 2.5 employees. This uses a lot of power, even while devices are in standby mode. If a company can reduce 2/3 of its devices, that equals almost 50% less power consumed!



brother  
at your side

### Brother MFC-9130CW Digital Color All-in-One with Wireless Networking

Brother takes advanced features like a 3.7" color TouchScreen display and wireless networking, and packs them into an affordable, compact All-in-One, designed to fit your organization's budget and workspace.

only **\$398<sup>99</sup>** #9580610

xerox

### Xerox WorkCentre 3655/X

The Xerox® WorkCentre™ 6655 Color Multifunction Printer, enabled by Xerox ConnectKey® Technology, is built for the way you want to work. From cost control and energy savings, to cloud-based scanning solutions and data security. Print efficiently no matter your organization's size.

only **\$1799<sup>99</sup>** #13255654

#13255662 Xerox WorkCentre 6655/X multifunction printer

**\$2499**



*Brilliant image quality requires high color brightness. Epson 3LCD projectors have 3x Brighter Colors than leading competitive projectors.*



## Present your audience with stunning visuals only Epson can provide

### Epson PowerLite S17 LCD projector

With a portable design and fast, easy setup, this versatile performer gets you up and running in no time, whether you're presenting in the conference room or across town. Offering 3x Brighter Colors than competitive models, Epson® 3LCD projectors ensure bright, compelling presentations. The VS230 delivers great image quality, plus 2800 lumens of color brightness and 2800 lumens of white brightness. And, it includes Epson's Simple Setup Suite with HDMI connectivity.

- 800 x 600 SVGA native resolution
- 2800 lumens white and color brightness
- Up to 10,000:1 contrast ratio
- Supports up to 1.07 billion colors
- 10 bit color processing
- Equipped with Epson 3LCD, 3-chip technology

only **\$389<sup>99</sup>** #9788011

## Experience professional quality film and photo scanning

### Epson Perfection V700 Photo Flatbed Scanner

Get professional quality results from virtually any photographic original with the Epson Perfection V700 Photo scanner. With ground-breaking 6400 dpi resolution, this powerful scanner consistently delivers precision color and detail, whether scanning slides, negatives or medium format film, and with a 4.0 Dmax, it offers exceptional image quality, excellent detail in shadow areas and remarkable tonal range.

- High performance 6400dpi optical resolution
- 4.0 Dmax for smooth gradations and fine details
- Automatically remove dust and scratches
- Selects from two lenses for desired scan resolution
- Batch scan multiple slides, negatives and medium-format film

only **\$699<sup>99</sup>** #7021293



# There's an HP LaserJet printer for every organization



## HP LaserJet Pro 400 M401n Monochrome Laser Printer

- Up to 35ppm B&W print speeds\*
- Up to 1200dpi resolution
- AirPrint enabled



Up to  
50,000 pages  
monthly

only **\$229** #9222451

\*print speeds vary with use.



Up to  
40,000 pages  
monthly

## HP LaserJet Pro 400 M451dn Laser Printer

- Up to 21ppm B&W print speeds\*
- 600dpi resolution
- HP ePrint technology

only **\$349<sup>†</sup>** #9003889

†Price valid 02/01/15-03/31/15.



Up to  
75,000 pages  
monthly

## HP Officejet Enterprise X555dn Ink Jet Printer

- Up to 72ppm B&W and color print speeds\*
- 1200 x 1200dpi resolution
- 4.3" touchscreen display

only **\$599<sup>†</sup>** #13065812

†After \$150 instant rebate. Ends 03/31/15.

## PCMG Terms of Use & Sale

- All returns require a return authorization number. Requests must be made within 15 days of purchase. Returns may be subject to a minimum 15% restock fee. The amount refunded will be the lower price of either the date of purchase or date of return.
- To request a return authorization number, please call your Account Executive at the phone number listed on the front of this packing slip.
- Tape the return label provided to you on the box and ensure the return authorization number is clearly marked. Do not write on the original manufacturer's box.
- Returned product(s) must be complete including manufacturer's original package, accessories, software and manuals. Incomplete returns may be refused.
- A product must be received in our warehouse within 10 business days from the date the return authorization is given.
- The customer is responsible for all return shipping costs. COD shipments will not be accepted.
- We are not responsible for lost or stolen packages. We recommend using a courier that can track your package with a tracking number.
- Pack your return securely. We recommend insuring it for your protection.
- All other policies are in accordance with the policies published in our latest catalogs and on our website [www.pcmg.com](http://www.pcmg.com).
- We are not responsible for integrity or backups of data on any drive returned to us even if included in a system.
- Subsequent to an approval authorization, a credit to an account or issuance of a check can take up to 30 days.
- Missing a rebate? Look it up on our website: [www.pcmg.com](http://www.pcmg.com) or call your Account Executive.

**Terms/Warranty Disclaimer.** PCMG expressly disclaims all expressed or implied warranties. Including any implied warranty of merchantability or of fitness for a particular purpose non-infringement. PCMG shall have no liability to anyone for incidental or consequential damages or any other liability, loss or damage arising out of or related to the merchandise sold. All merchandise is so "AS IS". PCMG makes no warranty as to the performance of any merchandise sold. We are not responsible for the system downtime, lost data, etc. This disclaimer by PCMG in no way affects the terms of a manufacturer warranty, if any. The following manufacturer's products cannot be returned for any reason. The manufacturer must be contacted for all repairs and warranty replacements. The warranty on the product is directly from the manufacturer. We will be happy to assist with the installation and instructions. However, the following manufacturers require you to contact them directly for repairs or replacement of your product. Unless subject to applicable master agreement or SOW signed by each parties, the offer and sale related to this invoice/packing slip is subject to the Terms of Use and Sale @ <http://www.pcmg.com> and those set forth herein notwithstanding any purchase order to the contrary. Any disputes related hereto must be brought individually and not part of any class, in accordance with the above relevant Terms of Use and Sale.

**The following manufacturer's product cannot be returned for any reason. The manufacturer must be contacted for all repairs and warranty replacements.**

VENDOR	Acer	APC	Apple	Cisco	Eaton	
TECH SUPPORT #	800.816.2237	800.555.2725	800.275.2273	800.553.2447	800.356.5794	
WEBSITE	<a href="http://www.us.acer.com">www.us.acer.com</a>	<a href="http://www.apc.com">www.apc.com</a>	<a href="http://www.apple.com">www.apple.com</a>	<a href="http://www.cisco.com">www.cisco.com</a>	<a href="http://www.eaton.com">www.eaton.com</a>	
VENDOR	Garmin	HP/COMPAQ	Hitachi	IBM	Lenovo	
TECH SUPPORT #	800.800.1020	800.474.6836	800.448.2244	Parts & Warranty 800.388.7080	800.426.7378	
WEBSITE	<a href="http://www.garmin.com">www.garmin.com</a>	<a href="http://www.hp.com">www.hp.com</a>	<a href="http://www.hitachi.com">www.hitachi.com</a>	Hardware Service 800.428.7378	<a href="http://www.lenovo.com">www.lenovo.com</a>	
VENDOR	Lexmark	Logitech	Microsoft	Olympus	Quark	Samsung CE
TECH SUPPORT #	800.332.4120	646.454.3200	800.642.7676	888.553.4448	800.676.4575	800.726.7864
WEBSITE	<a href="http://www.lexmark.com">www.lexmark.com</a>	<a href="http://www.logitech.com">www.logitech.com</a>	<a href="http://www.microsoft.com">www.microsoft.com</a>	<a href="http://www.olympusamerica.com">www.olympusamerica.com</a>	<a href="http://www.quark.com">www.quark.com</a>	<a href="http://www.samsungelectronics.com">www.samsungelectronics.com</a>
VENDOR	Seagate	Sharp	Sony PC's	Tom-Tom	Toshiba	Western Digital
TECH SUPPORT #	800.732.4283	800.237.4277	888.476.6972	866.486.6866	800.457.7777	800.275.4932
WEBSITE	<a href="http://www.seagate.com">www.seagate.com</a>	<a href="http://www.sharppusa.com">www.sharppusa.com</a>	<a href="http://www.sony.com">www.sony.com</a>	<a href="http://www.tomtom.com">www.tomtom.com</a>	<a href="http://www.toshiba.com">www.toshiba.com</a>	<a href="http://www.wdc.com">www.wdc.com</a>

Call 1.800.625.5468 or visit [pcmg.com](http://pcmg.com)



# iMac

Enjoy high-quality performance on-screen and behind the screen

The iMac is a masterpiece of design mixed with unprecedented functionality, perfect for home, education and everything in between. With its gorgeous wide screen high definition LCD display, the iMac offers you stunning visuals you won't be able to experience anywhere else.

No matter if you choose the 21.5-inch or the 27-inch or the premium iMac with 5K display, the iMac will never disappoint in providing you with the ultimate workflow or entertainment experience every single time because it is always equipped with the highest performance processors, memory, graphics and so much more.



**21.5" iMac**  
starts at **\$1089**

**27" iMac**  
starts at **\$1789**

**27" iMac**  
with Retina 5K display  
starts at **\$2494**



Dual workstation-class GPUs. State-of-the-art processor. Next-generation flash storage. Ultrafast memory. Unprecedented expansion capabilities. In a radical new design like no computer you've seen before. The future of the pro desktop is here.

**It's engineered around workstation graphics** with a Quad-Core Intel® Xeon® processor, 12GB memory and 256GB PCIe-based flash storage that deliver fast, responsive computing. Dual AMD FirePro D300 GPUs with 2GB GDDR5 video memory each offer superb graphics performance.

### Apple Mac Pro

- 3.7GHz Intel® Xeon® i5
- 12GB RAM • 256GB HD
- Dual AMD FirePro D300

only **\$2994** #9859482  
#9859499 Apple Mac Pro 3.5GHz 6-Core, 16GB, 256GB **\$3994**

# Mac mini

Enjoy computing with major power, maximum speed, and minimal space.



Model	Processor	RAM	Storage	Graphics	List Price	SAVE!	Price
#13312163	1.4GHz Intel® Core™ i5	4GB	500GB Hard Drive	Intel® HD Graphics 5000	<del>\$499</del>	\$5	<b>\$494</b>
#13312166	2.6GHz Intel® Core™ i5	8GB	1TB Hard Drive	Intel® Iris™ Graphics	<del>\$699</del>	\$5	<b>\$694</b>
#13312167	2.8GHz Intel® Core™ i5	8GB	1TB Fusion Drive	Intel® Iris™ Graphics	<del>\$999</del>	\$5	<b>\$994</b>

# MacBook Air

Apple Authorized Reseller

Thin, light, power-packed and ready for an entire day of work or play.

Get everyone's favorite work-on-the-go companion, the MacBook Air. Whether used for work or fun, the 11-inch MacBook Air lasts up to 9 hours between charges and the 13-inch model lasts up to an incredible 12 hours. So from your morning coffee till your evening commute, you can work unplugged. When it's time to sit back and relax, you can get up to 9 hours of iTunes movie playback on the 11-inch model and up to 12 hours on the 13-inch model. And with up to 30 days of standby time, you can go away for weeks and pick up right where you left off.



Model	Size	4th Gen Processor	RAM	Flash Storage	Graphics	List Price	SAVE!	Price
#13036492	11.6"	1.4GHz Intel® Core™ i5	4GB	128GB	Intel® HD Graphics 5000	<del>\$899</del>	\$5	<b>\$894</b>
#13036494	13.3"	1.4GHz Intel® Core™ i5	4GB	128GB	Intel® HD Graphics 5000	<del>\$999</del>	\$10	<b>\$989</b>
#13036493	11.6"	1.4GHz Intel® Core™ i5	4GB	256GB	Intel® HD Graphics 5000	<del>\$1099</del>	\$10	<b>\$1089</b>
#13036496	13.3"	1.4GHz Intel® Core™ i5	4GB	256GB	Intel® HD Graphics 5000	<del>\$1199</del>	\$5	<b>\$1194</b>

# MacBook Pro with Retina display

Brilliant display and phenomenal performance in a sleek, thin package.

MacBook Pro packs a lot of power into not a lot of space. Engineered to reconsider each detail of every internal component and maximize performance and minimize size for ultimate portability.



Model	Size	Processor	RAM	Flash Storage	Graphics	List Price	SAVE!	Price
#9824732	13.3"	2.4GHz Intel® Core™ i5	4GB	128GB	Intel® Iris™ Graphics	<del>\$1299</del>	\$299	<b>\$999**</b>
#9232227	13.3"	2.5GHz Intel® Core™ i5	4GB	500GB	Intel® HD Graphics 4000	<del>\$1089</del>	\$10	<b>\$1089</b>
#13240562	13.3"	2.6GHz Intel® Core™ i5	8GB	128GB	Intel® Iris™ Pro Graphics	<del>\$1299</del>	\$10	<b>\$1289</b>
#13240563	13.3"	2.6GHz Intel® Core™ i5	8GB	256GB	Intel® Iris™ Pro Graphics	<del>\$1499</del>	\$10	<b>\$1489</b>
#13240564	13.3"	2.8GHz Intel® Core™ i5	8GB	512GB	Intel® Iris™ Pro Graphics	<del>\$1799</del>	\$5	<b>\$1794</b>
#13240565	15.4"	2.2GHz Intel® Core™ i7	16GB	256GB	Intel® Iris™ Pro Graphics	<del>\$1999</del>	\$10	<b>\$1989</b>
#13240566	15.4"	2.5GHz Intel® Core™ i7	16GB	512GB	NVIDIA GeForce GT 750M (1GB GDDR5)	<del>\$2499</del>	\$5	<b>\$2494</b>

\*After \$70 mail-in rebate



Mailing Management Dept.  
1940 E Mariposa Ave.  
El Segundo, CA 90245-3467

PRSRT STD  
US POSTAGE  
PAID  
PERMIT NO. 748  
Thomaston, GA

Priority code #

Customer #

Vol. GE218G

## Travel light at full power

The HP EliteBook Folio 9480m Ultrabook1 keeps you productive from the airport to the desktop.



### 14" HP EliteBook Folio 9480m

- Intel® Core i5 4210U processor (2.7GHz)
- Engineered to meet Military (MIL-STD 810) Standards for reliability and performance under extreme conditions
- Fingerprint Identity Reader for Security
- US Based HP Elite Premium Support

**Call for pricing!** #13223535



*With enterprise docking and long battery life, you can keep up with whatever the day brings.*

1.800.625.5468 [pcmg.com](http://pcmg.com)

Fax additions, corrections, or a request to remove your name from this list to 310.630.3510. We do not release your private information. We occasionally share your postal address with other reputable companies.